



ULTRASONIX

ultrasound your way

Premium features. Intuitive interface. Online upgrades.

SonixMDP

Powerful and versatile ultrasound system



SonixMDP

Engineered to exceed your expectations

SonixMDP offers all the features you expect from a first-class ultrasound system plus the advantages of an open software platform.



An intuitive interface helps you work fast

SonixMDP is the ideal system for a busy clinic with a variety of patients. It's designed with dedicated keys for the application at hand. Whether you're doing a cardiac, OB/GYN or vascular ultrasound, you just need to select one button to get started. Keys and controls are grouped to enhance workflow. The system also has a touch screen panel for measurements and image control.

Ideal for shared services applications

Thanks to ECG trigger and comprehensive cardiac calculations and report packages, SonixMDP is the right choice for cardiac scans. It can also be used for other specialized exams including musculoskeletal, vascular and general imaging procedures. SonixMDP offers 2D imaging, M-Mode, PW and CW Doppler and Color Doppler.

Showing the way for interventional procedures

With its 17"/43cm monitor and optional features designed to enhance needle visualization, SonixMDP is the ideal system for radiologists who expect more from an ultrasound system. By showing a needle's trajectory in plane and out of plane, before and after insertion, SonixGPS speeds up and improves the accuracy of aspiration and injection procedures. SonixShine improves in plane needle visualization and helps to increase the accuracy and speed of biopsies.

Stay current and protect your investment

Keeping up with new technology typically means investing in a new product. But that's not the case with Ultrasonix systems. Built on an open software platform, SonixMDP systems can be updated with new software or upgraded with new technology and features through an Internet connection. Unlike traditional systems with fixed functionality, your old system can be new again in a few minutes with help from our remote support team.

Internet connectivity accelerates technical support

Since Ultrasonix systems can be connected to the Internet, you'll benefit from remote diagnostics and support in case you run into technical issues. You'll be able to connect to online databases for easy billing management. You can also share image files with authorized colleagues who are outside your immediate work environment for consultations and teaching opportunities.

With Ultrasonix, you get more than excellent images

In addition to making ultrasound procedures easy and fast, our systems are designed to streamline processes before and after scanning a patient. We offer various options to help improve patient care.

SonixGPS – a breakthrough in needle guidance

A new option on the SonixMDP ultrasound system, the SonixGPS needle tracking system is a true step forward. It lets clinicians accurately predict the needle's trajectory by displaying both the tissue and the needle. Using a sensor in the ultrasound probe and another one in the needle, it keeps track of the needle's distal tip and enables clinicians to access an internal target from any depth or angle, in plane or out of plane. SonixGPS promises to reduce procedure time and improve patient care by reducing the pain caused by multiple needle entries.

SonixDVR – Record an entire exam in a small file

With SonixDVR, it's easy to playback, archive and share past exams in the popular MPEG movie format. Start and stop a recording with one touch of a button. And you can share the file with authorized colleagues and patients. Unlike traditional Cineloops, which only record for about a minute, SonixDVR records long videos (including 4D exams) in high definition directly on the system.

SonixHub – Credentialing and billing made simple

Reduce the time, costs and paperwork associated with managing a busy ultrasound program or practice. SonixHub streamlines your credentialing, billing and quality assurance processes. Following an exam, it lets you complete a worksheet on the system using the touch screen and save it to a central server. You can also save video files recorded by SonixDVR to folders on the server. Any authorized user can review the files online from anywhere using a standard web browser. And you can generate QA, credentialing, exam and billing reports based on the recorded exam data.

Bar code reader and wireless access

No other ultrasound makes it easier to get patient data into and out of the system. Wireless connectivity means you record data and ultrasound images onto a central server even when moving the system from patient to patient. Using a bar code reader, simply scan a patient's wrist band or chart to accurately input patient information.

SonixCam—record complete procedures

SonixCam is an optional accessory designed primarily to facilitate education. It uses an adjustable HD camera to stream and record high-quality videos on the SonixMDP. Using a picture-in-picture feature, SonixCam captures both the ultrasound images and high definition video of the exam in one synchronized file.



SonixGPS helps to accurately predict your needle's trajectory



SonixHUB—credentialing and billing made easier

Unique features simplify the way you work with ultrasound

Ultrasonix systems incorporate novel elements that make it easier and more efficient to use ultrasound technology.



Various connectivity options facilitate sharing

SonixSP supports multiple data ports including USB, Ethernet, footswitch and DVI video connections. Transfer data easily and upgrade your system using accessible USB ports.

Flexible LCD screen

You can fold the LCD screen to move and store the system or tilt the screen for better visibility. Both image monitor and touch screen are adjustable

Optional battery power

You can have up to 90 minutes of uninterrupted power with our optional battery backup system.

Peripheral Tray

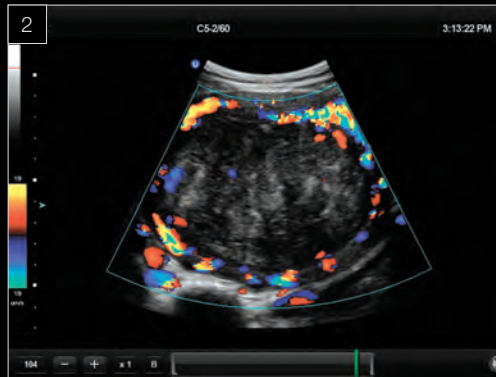
An optional tray conveniently houses printer, optical drive, and stores extra supplies.

Full-featured ultrasound system

SonixMDP is our top-of-the-line ultrasound system including a complete set of advanced modes and technologies. Using a traditional full-sized console with buttons and keys, you'll be able to access Color Doppler, PW Doppler, CW Doppler, Spatial Compounding, EPI, Pulse Inversion Harmonics, Trapezoidal, Panoramic, Freehand 3D, 4D and Cardiac modes including ECG.

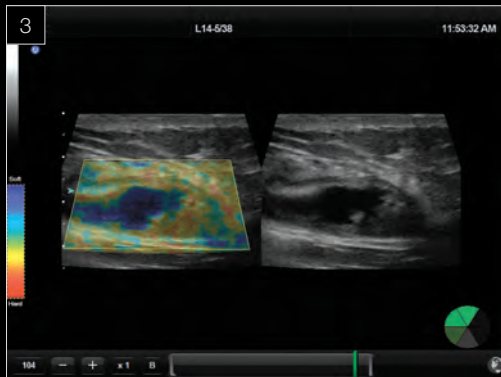


Premium image quality and advanced features for a variety of exams



1 Cardiac and CW

SonixMDP supports phased array transducers for adult and pediatric cardiac imaging applications. A separate continuous wave beamformer improves spectral signal-to-noise ratio.

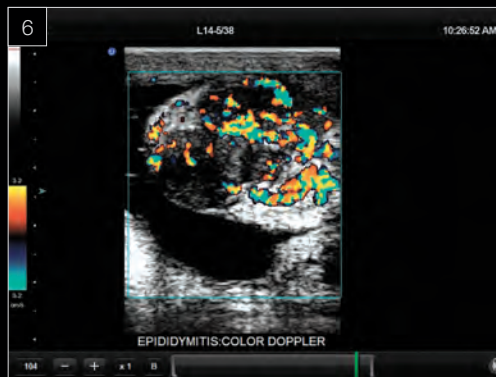
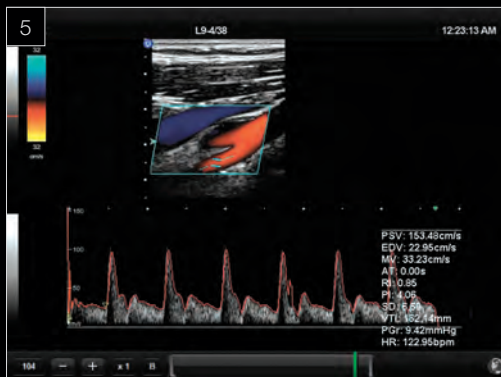


2 Premium 2D & Color

SonixMDP supports pulse inversion harmonics, spatial compounding and advanced adaptive speckle reduction. Sensitive color flow images demonstrate clinical vascularity.

3 Elastography

High frame rate elastography enables better dynamic response and interpretation of tissue stiffness. Our unique 2D color maps use special exclusion algorithms to clearly highlight stiff or soft tissue in real time.

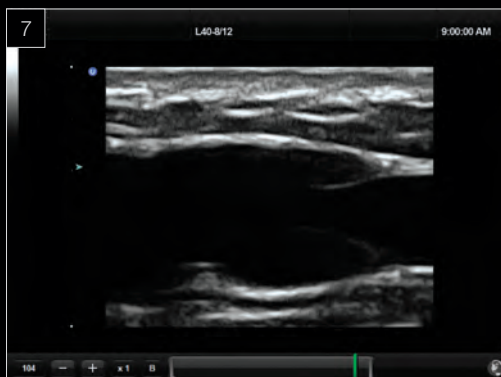


4 4D Imaging for OB/GYN

For OB/GYN applications, SonixMDP supports high performance, lightweight transducers for volume acquisitions. The 4D endocavity transducer supports high resolution single-sweep acquisitions that can be saved and reviewed on a separate computer.

5 Vascular

Multiple linear transducer for all vascular exams supporting Color and PW Doppler, Triplex, beam steering, Angle Correct, Simultaneous 2D/Color. Easy-to-use measurements and detailed report packages.



6 Sensitive Doppler

Very low-noise front-end electronics and 14-bit Analog to Digital converters enable sensitive Pulsed Wave Doppler and Color Flow imaging. Automatic optimization and measurement tools assist with diagnosis of flow states.

7 High Frequency Imaging

The Ultrasonix beamformer provides almost three times the total bandwidth of conventional systems. Enables support of high frequency transducers for imaging superficial structures in high resolution.

8 Musculoskeletal

Linear transducers, including 38mm hockey stick, supports 2D color imaging, Power Doppler, extended field of view and Panoramic imaging.

Ultrasonix Medical Corporation

Ultrasonix develops and manufactures diagnostic ultrasound imaging systems with customizable touch screens to simplify workflows. The company's systems are built on an open software platform that enables remote service and easy updates to keep current with advancements in imaging technology. Founded in 2000, Ultrasonix is a privately-held company headquartered in Richmond, British Columbia, Canada with affiliate dealers in 65 countries.

For more information

Email: info@ultrasonix.com

Call Toll Free in North America: 1-866-437-9508

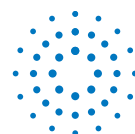
Call: 1-604-279-8550

www.ultrasonix.com/MDP

©2011 Ultrasonix Medical Corporation. All rights are reserved.
00.050.037 Rev C 1107021

Ultrasonix™, SonixGPS™, SonixHub™, SonixCam™, SonixDVR™, SonixShine™, SonixMDP™, SonixOP™, SonixSP™, SonixTouch™ and SonixTablet™ are trademarks of Ultrasonix Medical Corporation.

Ultrasonix Medical Corporation reserves the right to make changes in specifications, physical appearance and features and/or to discontinue any product at any time without notice or obligation. These materials do not contain complete information on Ultrasonix's products and should not be relied upon in using our products. Please contact us for technical information and materials for each product. We will not be held liable for any consequences that result from using this publication.



ULTRASONIX
ultrasound your way